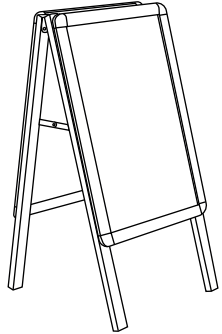


1. GRAPHIC + ANTIREFLECTION PROTECTOR **PLACEMENT**



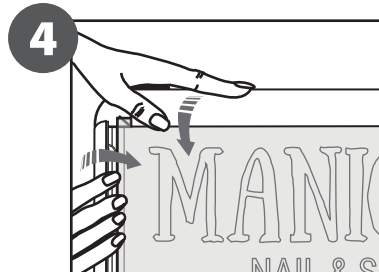
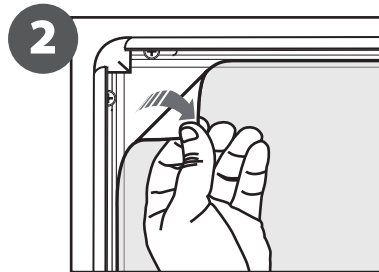
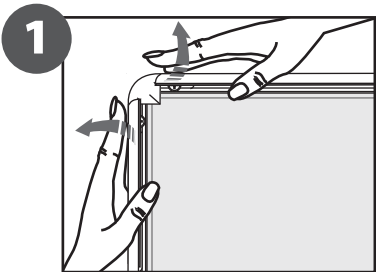
CONTENT



Open and check the content of the boxes and take out all the pieces carefully.

For setting-up the Sidewalk Board, you must place its graphics (supplied separately) to the upper Click Frame following the **next steps** describe below.

GRAPHIC ATTACHMENT **BY CLICK FRAME**



2. SET UP SIDEWALK BOARD **STRUCTURE**



ANTIREFLECTION
GRAPHIC PROTECTOR
INCLUDED

